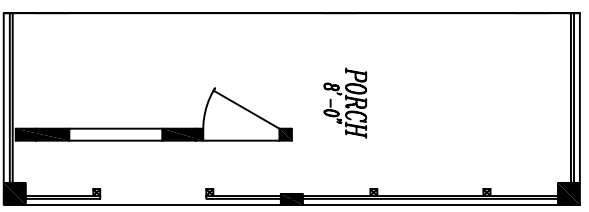


**MUST HAVE ADD'L
3RD. DOOR W/OPT GARAGE**

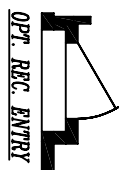


OPT. 8'-0" PORCH

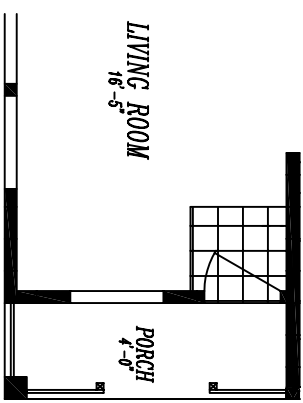
PACIFICA "24" - 2525-6

24'-0" x 52'-0"

APPROX. 1248 SQ. FT.



OPT. REC. ENTRY



**LIVING ROOM
16'-5"**

**PORCH
4'-0"**

**OPT. 4'-0" PORCH
WITH FRONT ENTRY**